



AEF 
Appleton Education Foundation
Community Education Series
Brain to Five

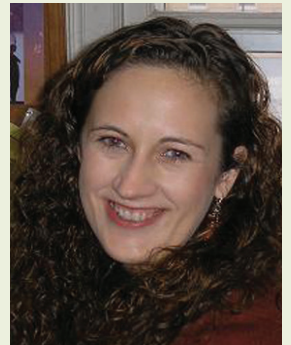
March 18 • May 3

JOIN US FOR OUR FREE THIRD ANNUAL SPEAKER SERIES
BRAIN TO FIVE:
THE ECONOMIC BENEFITS OF EARLY CHILDHOOD EDUCATION

EARLY CHILDHOOD SOCIAL ISSUES

Presented by Katherine Magnuson, PhD

THURSDAY, MARCH 18
7:00 P.M. - APPLETON EAST HIGH AUDITORIUM



PRESENTATION HIGHLIGHTS

Based on years of research and evaluation, Dr. Magnuson will discuss how poverty and socioeconomic status affect children starting at a very young age and the learning gaps that can result. She will explain how different factors such as family income and education play a role in development and the importance of early intervention. Dr. Magnuson will also share the benefits of early learning environments – including preschool and 4K – for all children.

ABOUT DR. MAGNUSON

Dr. Magnuson has researched the effects of poverty and socioeconomic status on families and has published several works detailing her findings. She spent two years studying children of immigrants, continues research work on poverty for multiple universities and has taught social work courses at the University of Wisconsin-Madison since 2004.

CREDENTIALS

PhD, Northwestern University; Assistant Professor of Social Work; Associate Director, Institute for Research on Poverty; Faculty Affiliate of the Waisman Center and the LaFollette School of Public Affairs; and Prevention Science Steering Committee, University of Wisconsin-Madison



THE HIGH RETURNS OF INVESTING IN EARLY LEARNING

Presented by Arthur J. Rolnick, PhD

MONDAY, MAY 3

7:30 P.M. - APPLETON WEST HIGH AUDITORIUM

PRESENTATION HIGHLIGHTS

A top national economist, Dr. Rolnick shares one of the less obvious, yet most effective solutions to achieving economic development: early childhood development (ECD) programs. He explains how the focus on expanding quality ECD programs now will benefit our children – and society – in the future, and provides statistics to support this thinking. Along with the financial returns of early learning, we'll find out how children's education in the first few years affects their contributions to society later in life.

ABOUT DR. ROLNICK

With longstanding support for non-profit organizations, Dr. Rolnick has been involved with a variety of educational causes including the Minnesota Early Learning Foundation and Ready 4 K. He researches various financial topics on behalf of the Federal Reserve Bank of Minneapolis and has a special interest in early childhood development and its ties to economic development.

CREDENTIALS

PhD, University of Minnesota; Bachelor's and Master's Degrees, Wayne State University; Senior Vice President and Director of Research, the Federal Reserve Bank of Minneapolis; Associate Economist with the Federal Open Market Committee

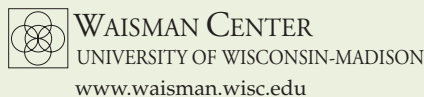
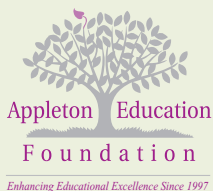
CHILD CARE AVAILABLE

Apple Tree Connections, 5020 North Providence Avenue, Appleton, will offer free child care for our Community Education Series presentations on March 18 and May 3. For more information, please contact Jennifer DesArmo at 560-5437.

CONTINUING EDUCATION

Continuing Education Credits are being offered toward professional development and training for certain fields/interests, including child care and education. Please check with your professional liaisons for more information.

If you are interested in helping with a future event, donating to our foundation, or simply sharing your ideas in support of education, please call us at 832-1517.



www.wisconsinacademy.org

Support for this community series provided by:

- Affinity Health System
- Appleton Area School District
- Appleton East High School
- Appleton Education Association
- Appleton Public Library
- Appleton West High School
- Community First Credit Union
- Festival Foods
- J. J. Keller Foundation, Inc.
- Mielke Family Foundation
- Miles Data Technologies
- N.E.W. Printing
- School Specialty
- ThedaCare
- Thrivent Financial for Lutherans
- University of Wisconsin Foundation
- Waisman Center at UW-Madison
- Willems Marketing

Wisconsin Academy of Sciences, Arts and Letters